



Teras Offshore

A subsidiary of Ezion Holdings Limited

Teras Conquest 7

59.00m x 40.00m x 5.0m Self Elevating Liftboat with Tubular Legs



Specifications

Length Overall: 59.00m

Beam Moulded: 40.00m

Depth Moulded: 5.0m

Summer Draft Moulded: 3.50m

Operating Draft with (0.8)m propeller nozzle protrusion: 4.2m

Fixed Leg Length: 102.50m

Usable Leg Length under Main Hull: 84.40m

Leg Diameter: 3.048m

Maximum Water Depth: 77.5m

Gross Tonnage: 5639

Call 65.6309.0555
Fax 65.6222.7848
Co.Reg.No. 200715754M

Mail 15 Hoe Chiang Road Tower Fifteen #12-05 Singapore 089316
Web www.terasoffshore.com



General Specifications

GENERAL

| | |
|------------------------------|---|
| Port of Registry/Flag | Singapore |
| Official Number | 9V2180 |
| Class | ABS |
| Notation | A1, Accommodation Service, Self Elevating Unit, AMS, DPS 1, Wind AMR, CRC |
| Built | 2014, Saigon Shipyard Co. Ltd, Vietnam |

| | |
|-------------------------------|--|
| Jacking Gear Units | 42 pinions drive gears unit per liftboat, 14 per leg |
| Jacking Speed | Normal jacking capacity 0 to 2.9FPM @ normal jacking capacity. No load leg tagging 0 to 6FPM |
| Steering System | Electric/hydraulic steering, with 2 stations |
| Fuel Oil Tank Capacity | 510.0MT |

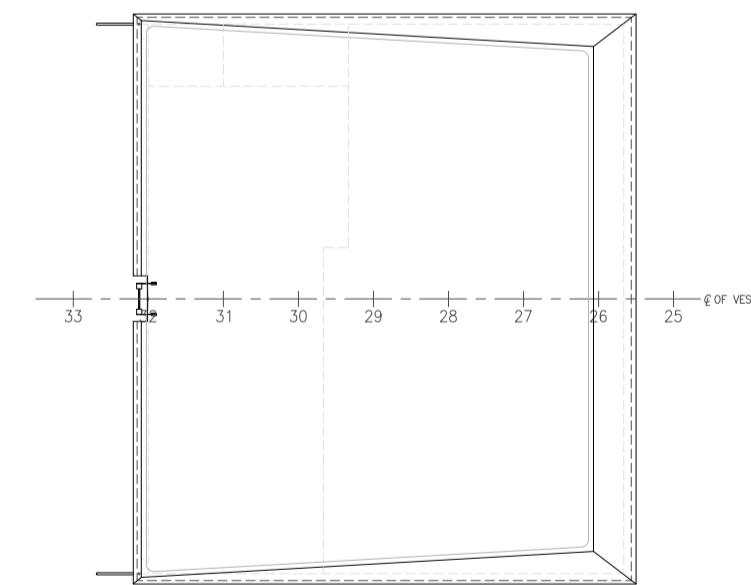
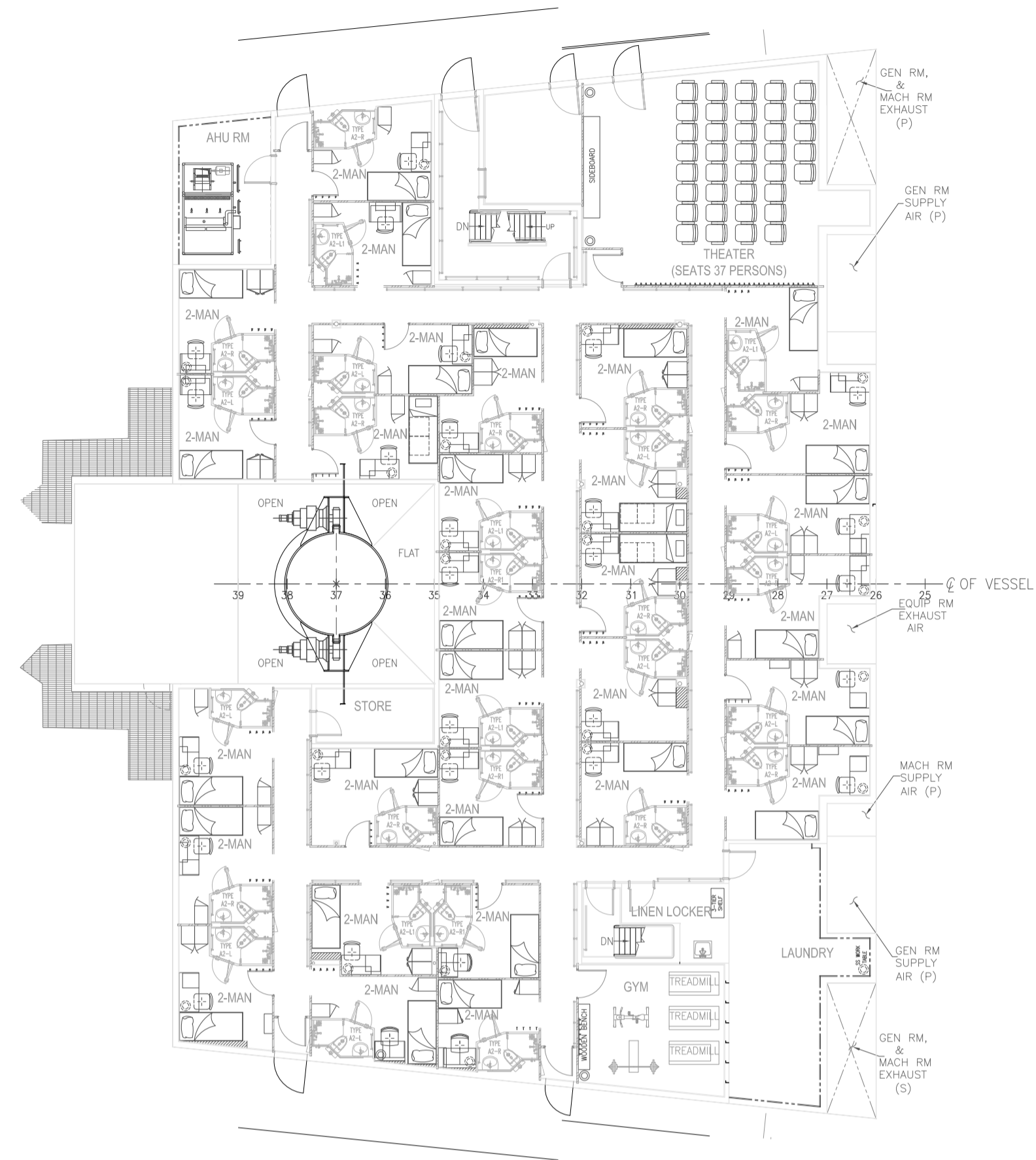
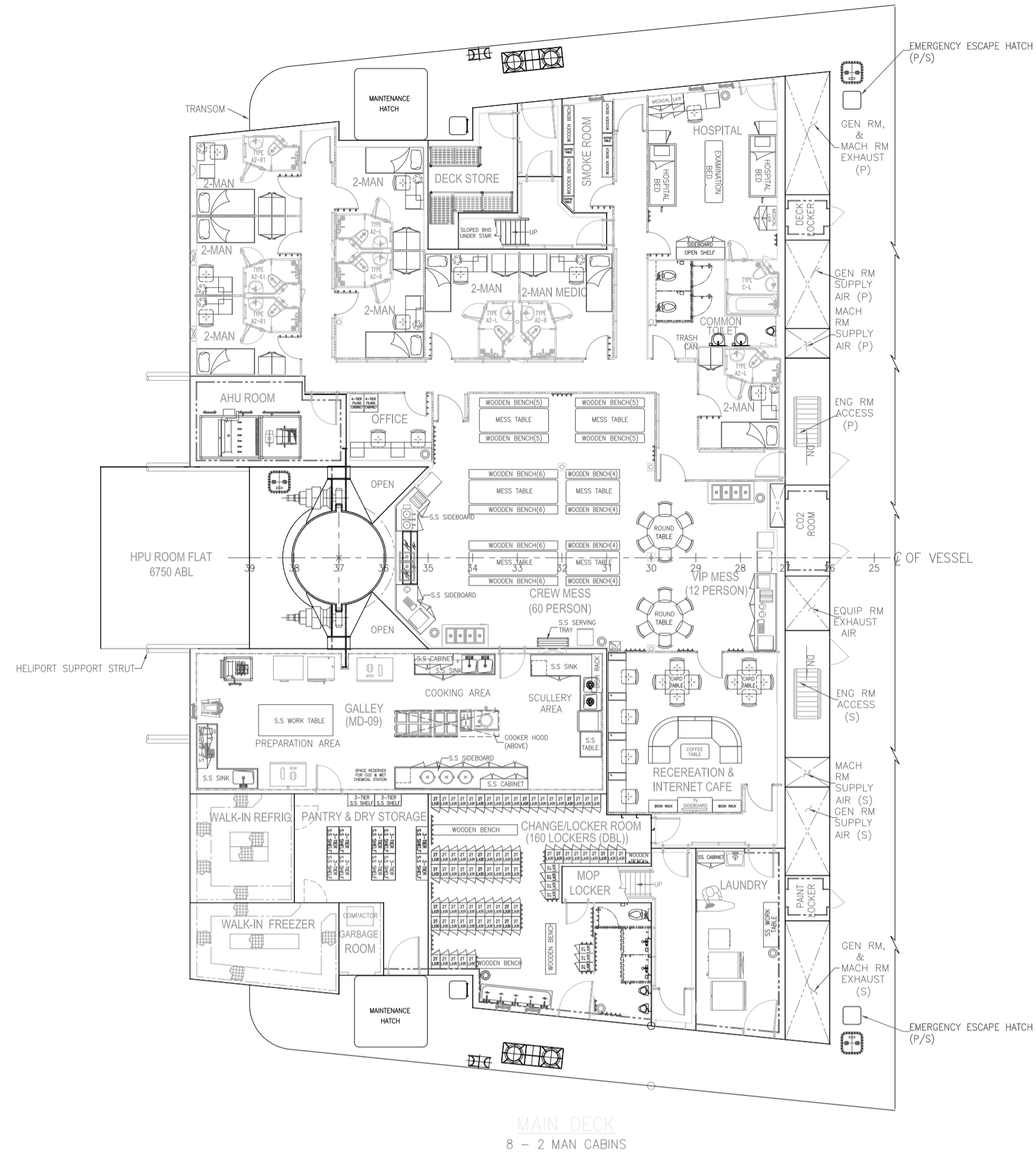
ADDITIONAL FEATURES

| | |
|-----------------------------------|---|
| Speed | Approx 6 knots |
| Helideck Rated | Suitable for Helicopter type: Sikorsky S-92 and Sikorsky S61N |
| Propulsion | 2 x 1500KW Berg CPP Azimuth Thruster (stern) 1 x 440KW Berg Tunnel Thruster (bow) |
| Electric Power Generator | 4xCaterpillar model 3512C genset rated at 1432kW @ 1800 RPM. |
| Emergency Generator | 1xCaterpillar model C18 genset rated at 465kW @ 1800 RPM. |
| Self-elevating Power Units | 3 x HPU, each HPU is including 2 Electric motors 400 hp @ 1760rpm, TEFC, I-EEE45 marine duty 690/3/60 |

| | |
|----------------------------------|---|
| Fresh Water Tank Capacity | 450.0MT |
| Accommodation | 04 x Single men cabin with attached toilet 73 x 2 men cabin with attached toilet Total : 150 Pax, including navigation crew |
| Ancillary Equipment | 2 unit LEC Crane with capacity 122.5 tons @ Max. reach 38.10m (125ft) and min. reach 7.62m (25ft) |
| Load During Jack Up | 680 MT |
| Free Deck Space | 1,475 sqm |
| Deck Sheathing | 755 sqm |

** This vessel specification is given in good faith & assumed to be correct. Details given are without guarantee.

** Owners reserved the right to amend the specifications without notification.



C
D